

# imageNow Installation – easy as 1, 2, 3!

1

**Watch the [installation video](#)**

Profile Name: ImageNow Client 6.6

Server Name: imagenowprd01.dpu.depaul.edu

Port Number: 6750

**Complete the configuration steps below**

2

3

**Start going paperless!**

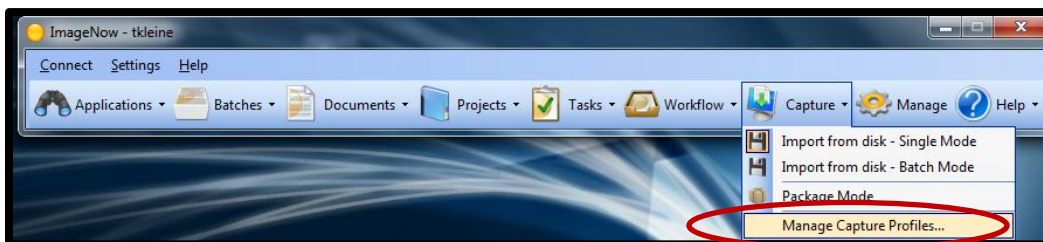


## INITIAL PROFILE CONFIGURATION

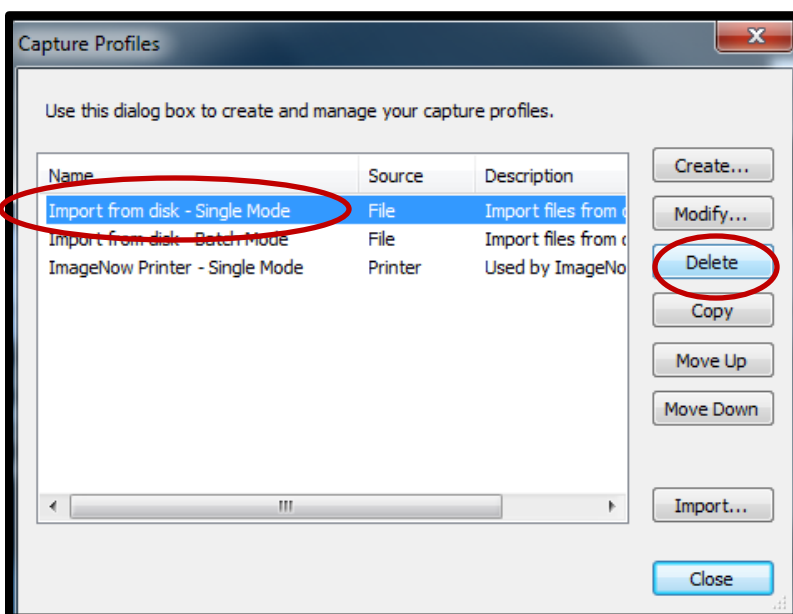
1. Log into ImageNow client with your Campus Connection user name and password:



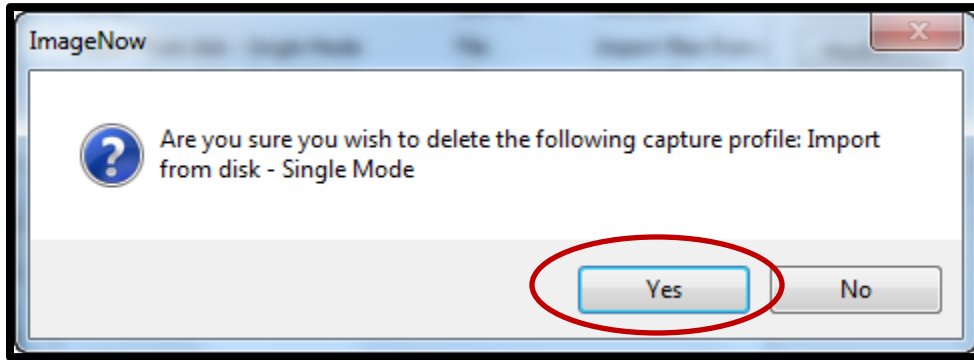
2. From the ImageNow client toolbar, select "manage capture profiles" from the Capture drop-down menu:



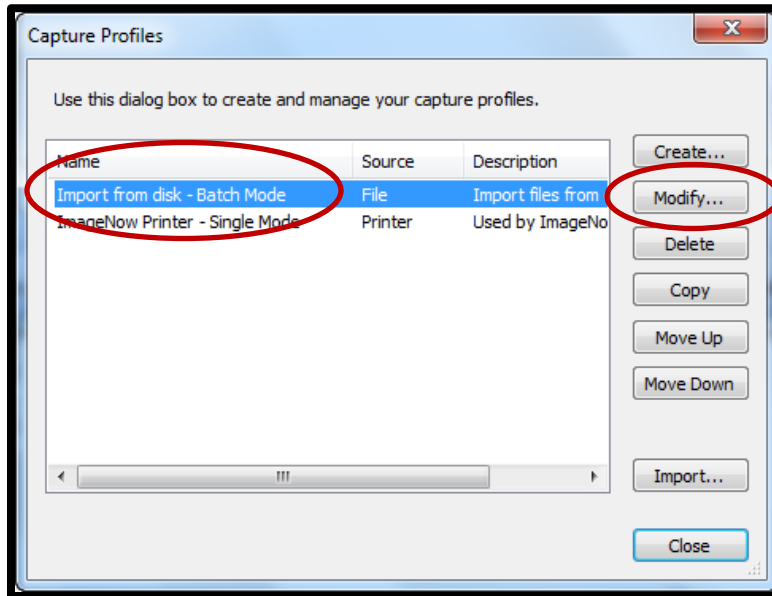
3. From the "Capture Profiles" dialogue box, select "Import from Disk – Single Mode" to highlight. Then, click "delete":



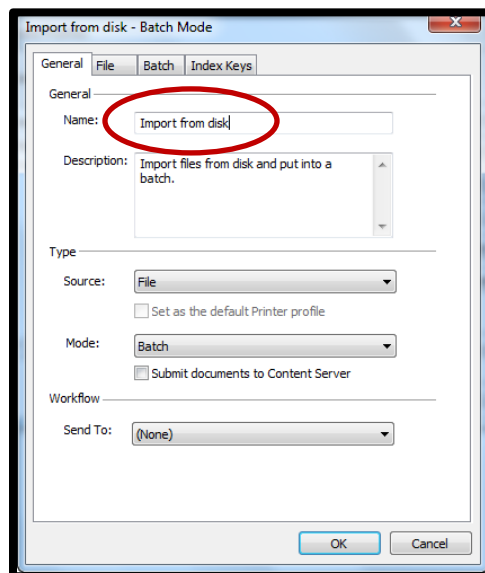
4. Agree to the deletion of the profile:



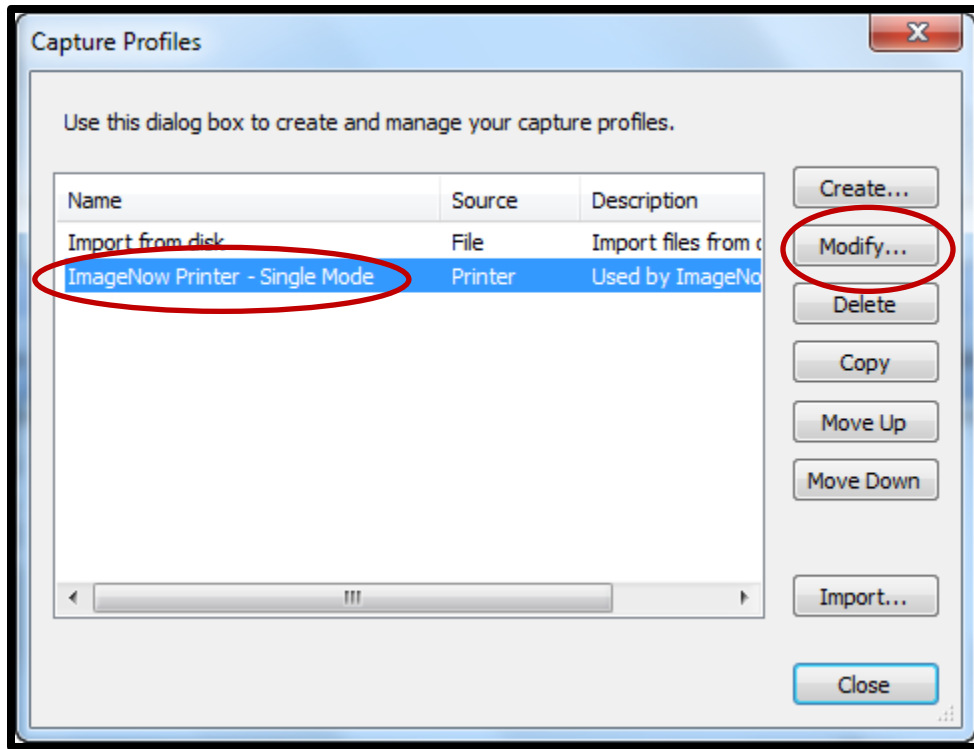
5. Select "Import from disk – Bath Mode" from the "Capture Profiles" dialogue box. Then, click "modify":



6. Change the text of the "name" to be "Import from disk". Then, click "ok":



7. Select "ImageNow Printer – Single Mode" and click "modify":



8. Rename to "ImageNow Printer". Also, change the mode to "batch" and click the box for "Set as the default Printer profile". Click "ok" when finished:

